



Gobierno de Reconciliación y Unidad Nacional
El Pueblo, Presidente!



MARENA
Ministerio del Ambiente y los Recursos Naturales

Mid-term Report

NICARAGUA



**FOREST
CARBON
PARTNERSHIP
FACILITY**

Contents

- I. Country Context
- II. Midterm Report (self-evaluation)
- III. The common approach in practice
- IV. FCPF budget and financial performance
- V. Request for additional funds



I. Country context

Political Commitment

Nicaragua, under the leadership of President and Commandant Daniel Ortega Saavedra, defends Mother Earth

Legal Framework

Private Investment

ENDE REDD+
Legal
Framework

**Nicaraguan
Constitution**

Ley 28

Autonomous Statutes of
the Caribbean Coast

Ley 445

Communal Property
System Law

Ley 620

General Water
Resources Law

Ley 765

Law to Promote Agro-
ecological Production

Ley 217

General Law on the
Environment and Natural
Resources

Ley 807

Biodiversity Law

Ley 462

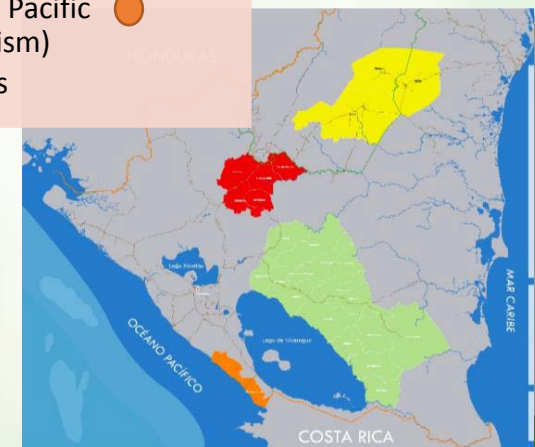
Forest Conservation
Law

Initiative 20x20

2.8 million hectares

At least 29 municipalities

- Municipalities in the Bosawás Biosphere Reserve
- Municipalities in which coffee is grown under shade
- Municipalities surrounding Lake Nicaragua (agriculture and cattle-ranching)
- Municipalities on the Pacific (agriculture and tourism)
- Six private companies



National Forest and Environmental context

4.49 Mha

Forests area nation-wide (35%)

49 %

Forest area within indigenous territories

3.7 %

Preliminary deforestation rate (2000 – 2010)

68

Threatened ecosystems ~ 20,000 species of flora and fauna

1.1 M

Vulnerable population whose livelihoods highly depend on forests

3

Biosphere reserves: Bosawás, Indio-Maíz and Ometepe Island

- 30% WB

Best Disbursement ratios in LAC the last














- 127% FCPF

3 year



II. Mid-term Report (self-evaluation)

R-PP implementation: Overall Progress

| Component | Sub-component | Progress | |
|---|--|---|--|
| 1. Organization and consultation for readiness | 1a. National Mechanisms of REDD+ program management |  | |
| | 1b. Consultation, participation and social broadcasting |  | |
| 2. ENDE REDD+ readiness | 2a. Land use assessment, factors causing changes in land use, legislation on forestry, policy and management |  | |
| | 2b. REDD+ Strategy Options |  | <p>Progress</p> <p><i>Significant Progress</i> </p> <p><i>Good progress, needs further development</i> </p> <p><i>Further development needed</i> </p> <p><i>Does not show progress yet</i> </p> |
| | 2c. Implementation Framework |  | |
| | 2d. Social and Environmental Impacts |  | |
| 3. Emissions level of reference / reference Levels | |  | |
| 4. National Systems of Monitoring and Information on the Safeguards | 4a. National Forest Monitoring System |  | |
| | 4b. Information system for multiple benefits, other impacts, management and safeguards |  | |

1a. National ENDE-REDD+ Management Arrangement

- Compliance with the national legal framework and Grant Agreement (TF 99264) regarding use, management and administration of external funds
- **Six technical** and joint supervision missions (Ministry of Finance and World Bank)
- **Two financial and compliance audits**
 - Office of the Comptroller General
 - External audit companies: Price Waterhouse Cooper
- Satisfactory results concerning fiduciary funds management

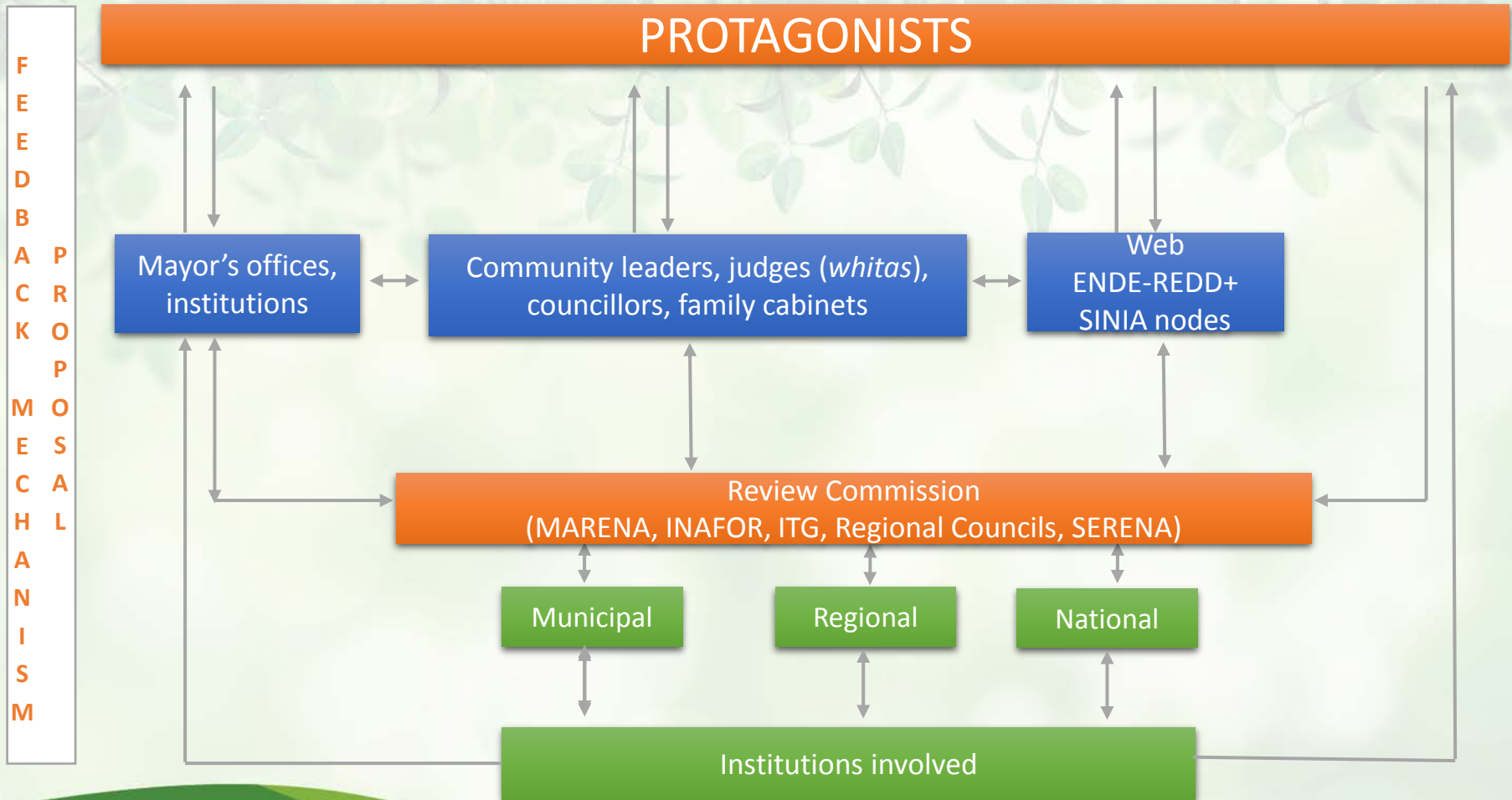


GOAL

Continue the efficient use of financial resources in Readiness

1a. National ENDE-REDD+ Management Arrangements

Broad-based community participation in the process to design the ENDE-REDD+ Feedback Mechanism (9 workshops, 563 protagonists)



GOAL A broad-based and inclusive ENDE-REDD+ Feedback Mechanism in place by the first semester of 2017.

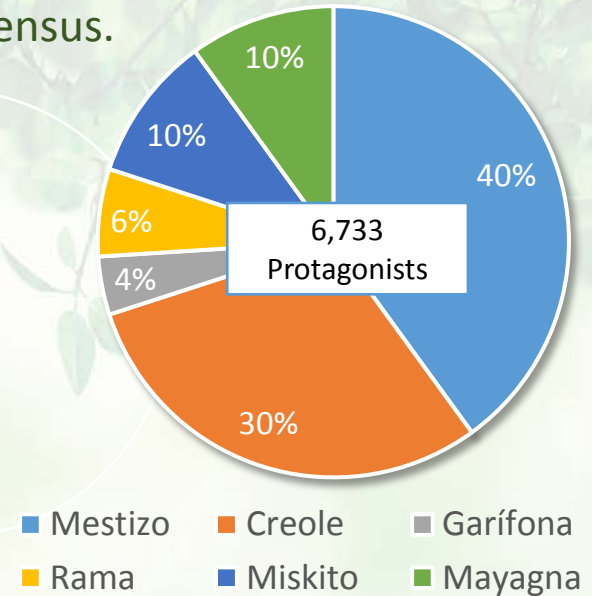
1b. Consultation, Participation and Outreach

The ENDE-REDD+ program is being designed using the model promoted by the government of Nicaragua, which is based on dialogue, alliances and consensus.

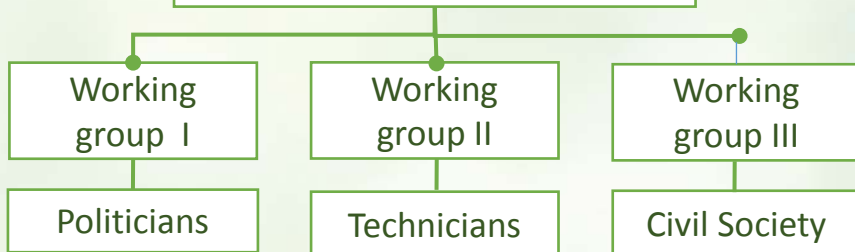
Multiple actors:
indigenous peoples, farmers, academe, environmentalists, others.

Autonomous regions of the Caribbean coast, municipal governments.

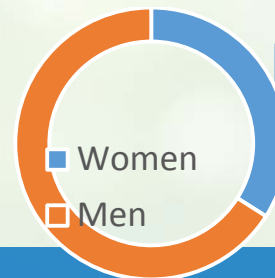
100% (26) indigenous territorial governments (ITG) involved in consultation and dialogue processes.



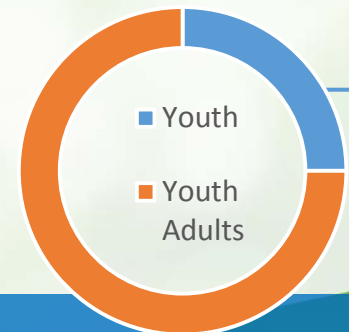
Dialogue, consultation and consensus



34%
women



25%
youth



GOAL

ENDE-REDD+ program validated and consulted in 2017

1b. Consultation, Participation and Outreach

Broad-based participation in the ENDE-REDD+ Programme process



Free, Prior and Informed Consent

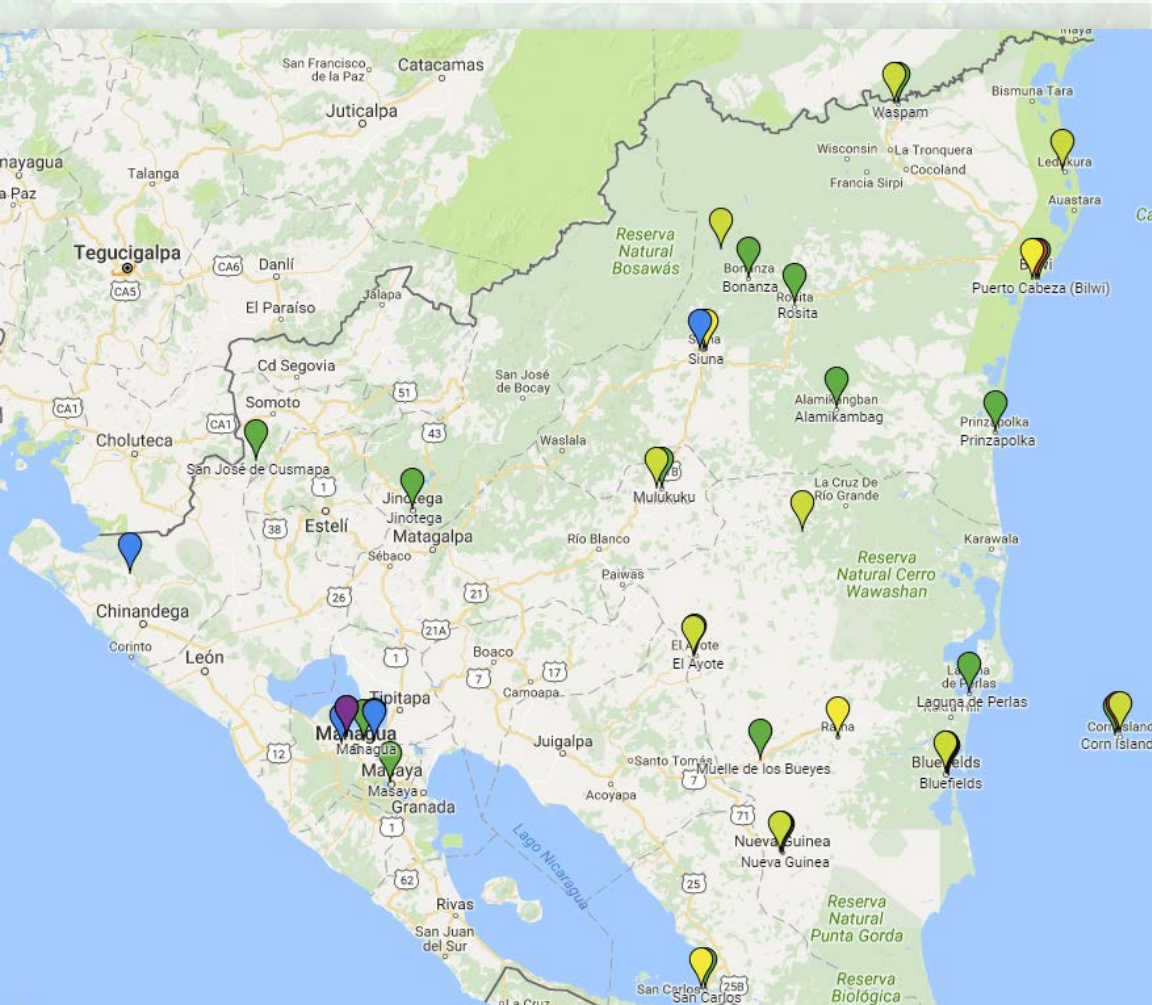
Favourable conditions are created for the process of consulting with indigenous and afrodescendant communities on ENDE-REDD+

GOAL

Strengthening participation, communication, decision-making, as well as the ENDE-REDD+ Program' Feedback Mechanism

1b. Consultation, Participation and Outreach

Broad-based participation in the ENDE-REDD+ Program process



Summary of Broad-based Community Participation

| Activities | # of events | Participants |
|-----------------------|-------------|--------------|
| Workshops | 69 | 2,313 |
| Forums and congresses | 11 | 1,620 |
| Fairs | 3 | 1,020 |
| Concerts | 1 | 300 |
| Visits to communities | 9 | 550 |
| Work sessions | 5 | 250 |
| Total | 145 | 6,733 |

<https://www.google.com/maps/d/viewer?mid=1DhPgCfkjD4e7PvAtqF1CSZZeD7k>

2a. Land-use Assessment

RPP and ERPIN: intense national consultation processes to reach consensus

Dialogue and consultation

Progress
100%

- 22 workshops, 3 congresses
- 581 Participants (communities, technicians, ITG)
- Regional EESA roundtables



Quantitative Analysis

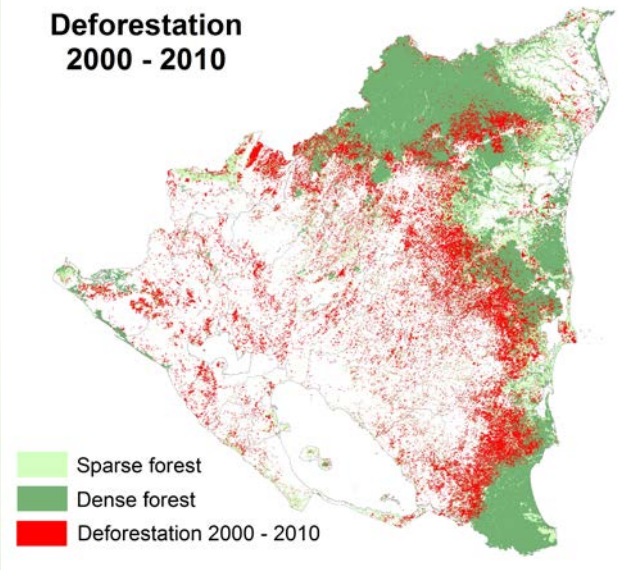
Progress 65%

- Validation of drivers (direct and underlying)
- Relation between drivers, legal framework and public policy
- Methodology for prioritizing drivers

Next steps

- Spatialize causes and agents of deforestation
- Conclude the study on drivers of deforestation
- Analyze opportunity cost of avoided deforestation
- Map productive, economic and sectoral investments
- Identify ways of overcoming the barriers to carbon stock enhancement and implementing ENDE-REDD+ activities

Deforestation
2000 - 2010



GOAL

To update the evaluation of the drivers of deforestation and degradation of forests (multiple factors, special and linked to the legal framework and public policy) by end October 2016

2b. ENDE-REDD+ Strategy Options

The identification and validation of strategic options regarding drivers of deforestation carried out during EESA working sessions, with ample participation by protagonists

49 Workshops + three SESA sessions

- Institutional capacity strengthening
- Strengthen value chains of forest products
- Improve forest management in the territory
- Adjust and harmonise the regulatory and policy framework
- Incentives development
- Reconversion of productive systems

**ENDE
REDD+**

Linked to

Environment
and climate
change

Linked to

Forest sector

Linked to

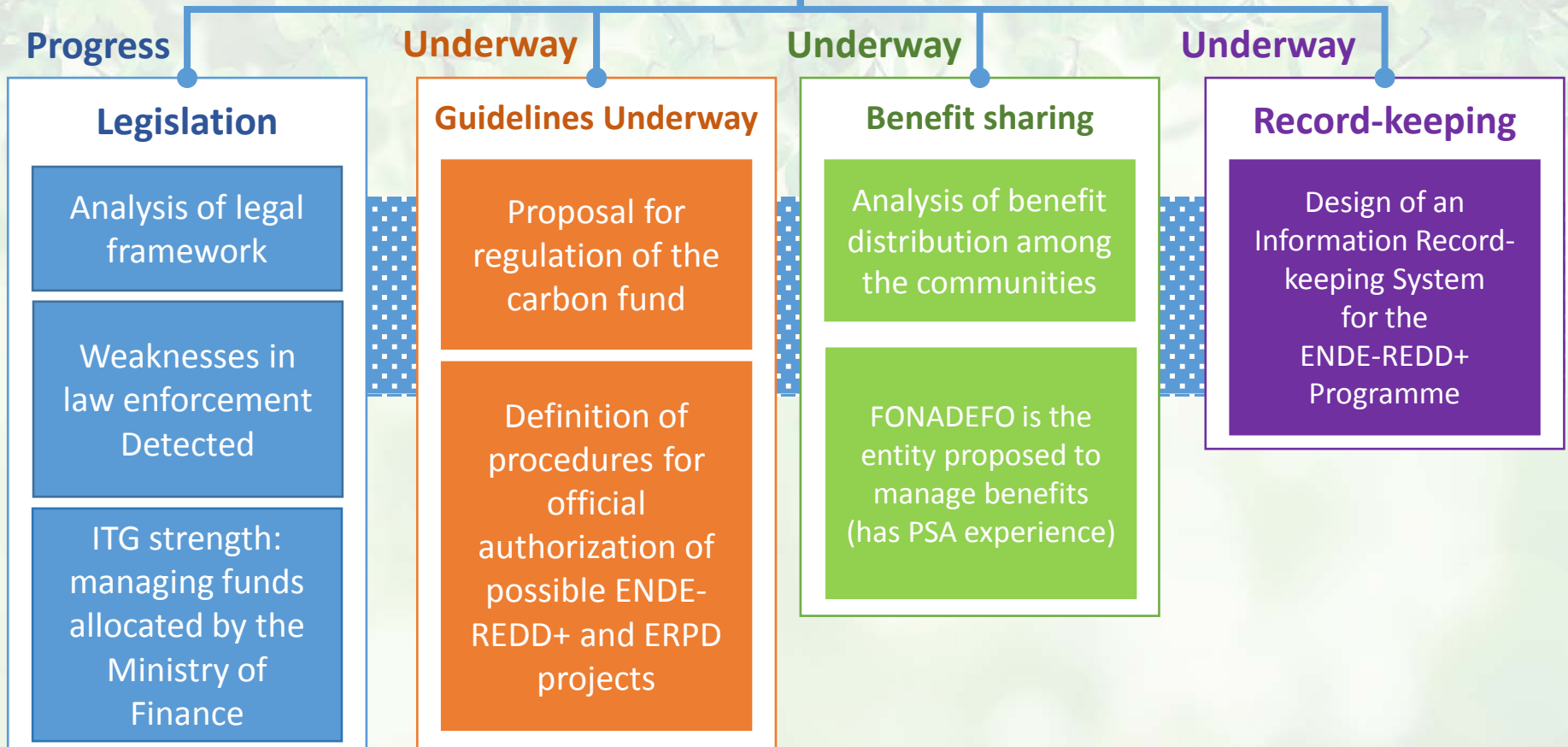
Agricultural
sector

GOAL

By late December 2016 the ENDE-REDD+ Program has a comprehensive and robust action plan to reduce the deforestation rate and forest degradation

2c. Implementation Framework

Six dialogue workshops and six SESA sessions held to advance the Implementation Framework



GOAL

Consensus reached on ESMF: validated and ready to support the implementation of ENDE-REDD+ initiatives nationwide starting by January 2017

2d. Social and Environmental Impact Assessment

Two regional roundtables established (RACCS and RACCN) for social and environmental strategic evaluation – 7 work sessions

Environmental and social safeguards analysed.
Thirteen ESSA workshops held.

Next steps



GOAL

Consensus reached on the ESMF: validated and ready to support the implementation of ENDE-REDD+ by January 2017

Component 3: Reference Emission Levels

- Preliminary REL prepared, using information for the period 2000-2010
- Ongoing activities to complete the final REL
 - Calculations to be based on maps from 1983, 2000, 2005, 2010 and 2015
 - Estimates based on: GBC IPCC, INGEI AFOLU
 - Data from the 2007-2008 forestry inventory
 - Resampling of permanent sampling plots in the National Forest Inventory during 2015, fifty-four sampling parcels updated
 - Forest fires national database
 - Emissions due to deforestation and forest degradation



Institutional capacity strengthening

Technicians in the territory have strengthened their capacities on matters regarding deforestation, degradation and levels of reference

Indigenous territorial governments understand the importance of estimates for levels of reference

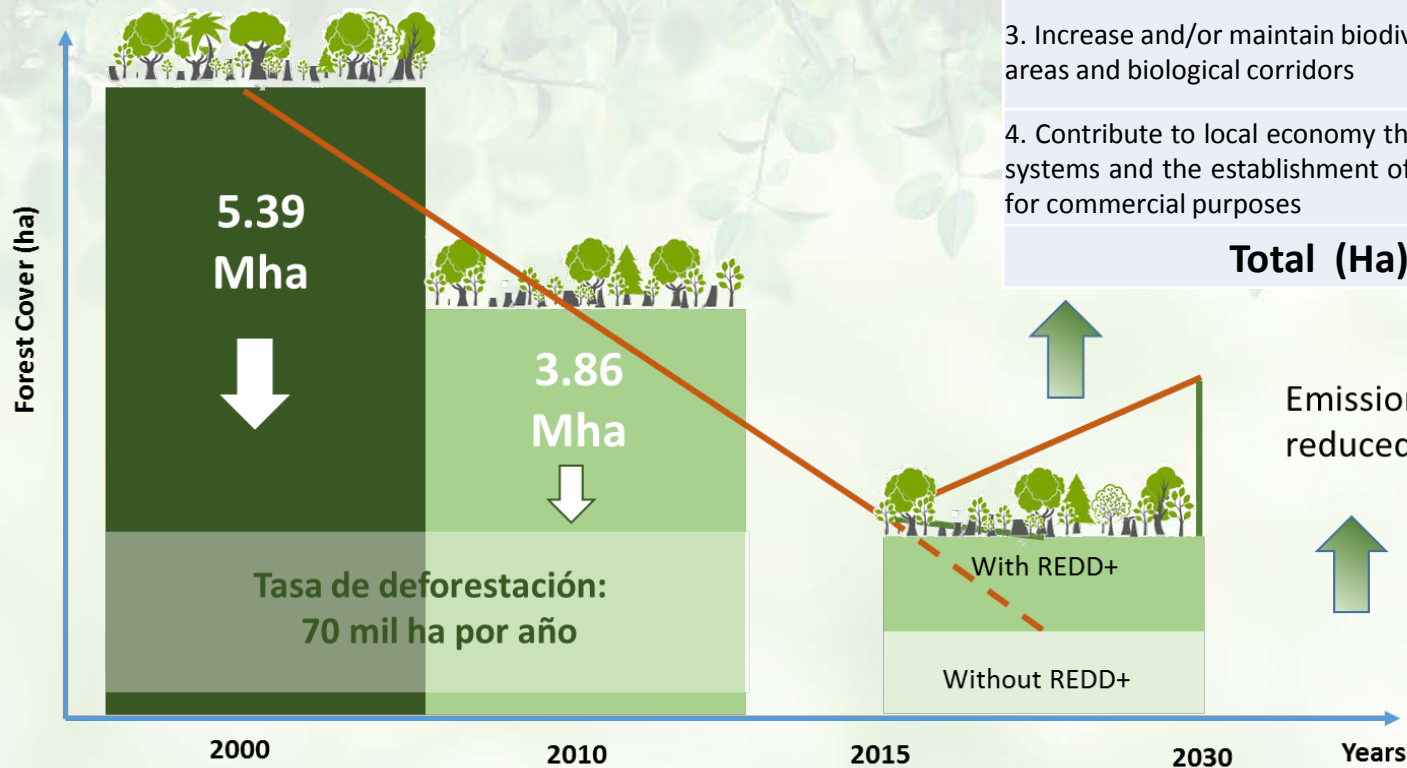
National and territorial technical work roundtables (SESA and MRV)

GOAL

A final REL is estimated and defined by December 2016 and NREF is validated by Working Group I in January 2017

Component 3: Reference Emissions Level

NFREL constitute the country baseline and includes scenario estimates “with” ENDE-REDD+ activities



Mid-term national budgetary framework

| Country targets by 2030 | Ha |
|---|------------------|
| 1. Protect and recover water recharge zones and water bodies | 266,291 |
| 2. Risk reduction ref. erosion and landslides. | 52,723 |
| 3. Increase and/or maintain biodiversity in protected areas and biological corridors | 3,041,329 |
| 4. Contribute to local economy through agroforestry systems and the establishment of forest plantations for commercial purposes | 1,166,362 |
| Total (Ha) | 4,526,705 |

Maps used: LANDSAT images from 1983, 2000, 2005, 2010, 2015
Validation of historic land use changes.
Analyze time series 2000-2010, 2005-2015, 2000-2015 (underway)

Factor Emissions (FE) reviewed and improved estimations
FE based on Nat. Forest Inventory 2007-2008 and SIRCOF 2000-2010

Definition of forest to be defined
Scale: National
Scope: Deforestation and forest degradation



Component 3: Reference Emissions Levels

Next steps

- Continue to strengthen national and regional capacities to estimate emissions / absorptions during 2016-2017
- National validation with Group 1 of methodological documents used for establishing the NREF.
- Complete analysis for land use changes time series (2000-2010, 2005-20015, 2000-2015).



*Official maps of Nicaragua: 1983, 2000 and 2015 / Control maps: 1990 and 2010
Underway: mapas 2005, 2010 y 2015*

GOAL

Reach consensus on and validate the NREF at the MRV roundtables for the purpose of defining assumptions and the country baseline by December 2016

4a. National Forest Monitoring System

The process of building an ENDE-REDD+ Program Information System has laid the foundation to achieve adequate and sustainable development of SNMB.

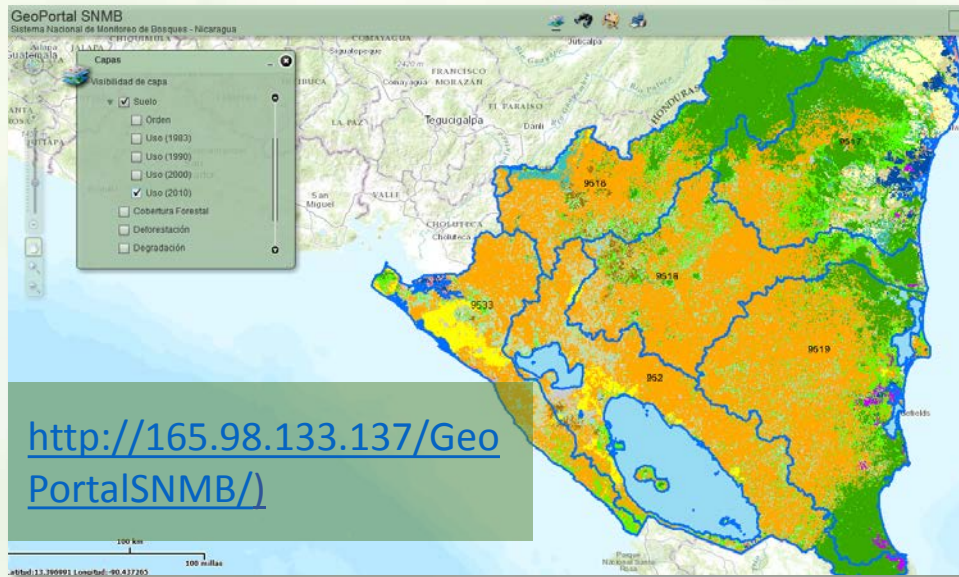
4 GIS workshops

76 Participants

Men
Women

23%
women

Remote Sensing: 50% established
Web Interface: 30% completed
GHG Inventory: 80% established



Ministerio de Reconstrucción y Calidad Ambiental
¡Que Pueblo, Pasa el día!

Sinia

2016
¡VAMOS A SER LA
CATEGORÍA DE VICTORIAS!

Inicio ENDE-REDD+ Programa Nacional Participación Ambiental Seguimiento Componentes Geográficos Forestales

PROGRAMA ENDE-REDD+

PROGRAMA NACIONAL DE DEFORESTACIÓN EVITADA • REDUCCIÓN DE EMISIONES POR DEFORESTACIÓN Y DEGRADACIÓN FORESTAL

Bienvenid@s al Programa ENDE-REDD+

El Buen Gobierno de reconciliación y Unidad Nacional (GUBUN) a través del MARINA, está dirigiendo esfuerzos para combatir el problema de la deforestación y degradación forestal, más la pérdida de la biodiversidad y medios de vida de comunidades indígenas, a través del diseño y posterior implementación del Programa Nacional de Deforestación Evitada, aprovechando la oportunidad del mecanismo Internacional REDD+.

El contexto nacional de la ENDE-REDD+

La ENDE-REDD+ es una iniciativa que tiene como finalidad mitigar la deforestación y la degradación forestal, y por consiguiente las emisiones de gases de efecto invernadero producto de estos fenómenos, mediante la implementación de medidas orientadas a hacer frente a los agentes que conducen a la pérdida de cobertura forestal y al cambio de usos de la tierra, impactar de manera positiva en la economía nacional y en los medios de vida de las comunidades rurales, el aumento de la capacidad de recuperación de los ecosistemas, promoviendo el desarrollo de Mecanismos Propios de Prevención y Alertas Tempranas oportunas. Dicha iniciativa es producto de los esfuerzos nacionales derivados del Plan Nacional de Desarrollo Humano (PNCH) y de los eses de desarrollo que implementa el Gobierno de Reconciliación y Unidad Nacional.

INFORMACIÓN

FOREST CARBON PARTNERSHIP
Documentos de Nicaragua

Centro de

<http://enderedd.sinia.net.ni>

GOAL

Validate and launch the National Forest Monitoring System (SNMB) in December 2016

4a. National Forest Monitoring System

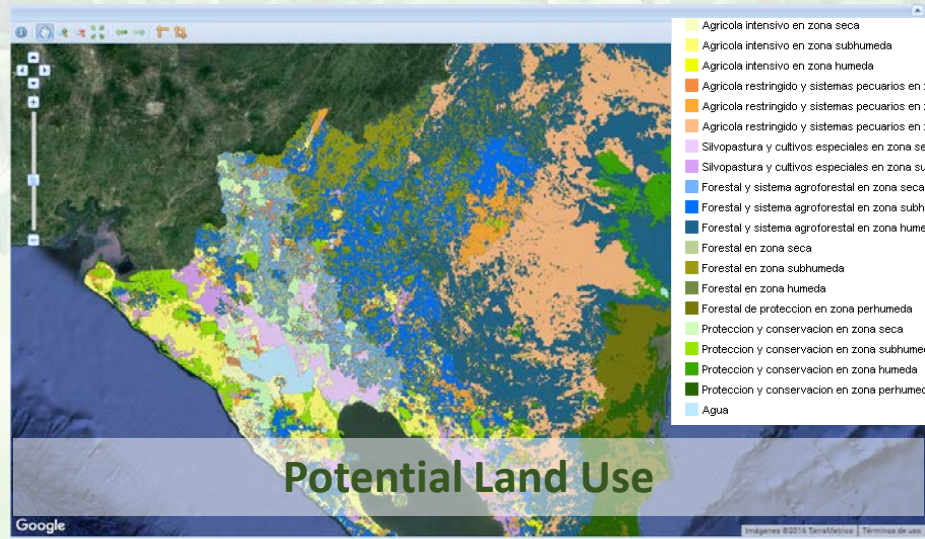
INETER
(Nic.
Geological
Survey)

Nationwide monitoring of crops
(seasonal and permanent)

Monitoring of climate and
meteorological variables

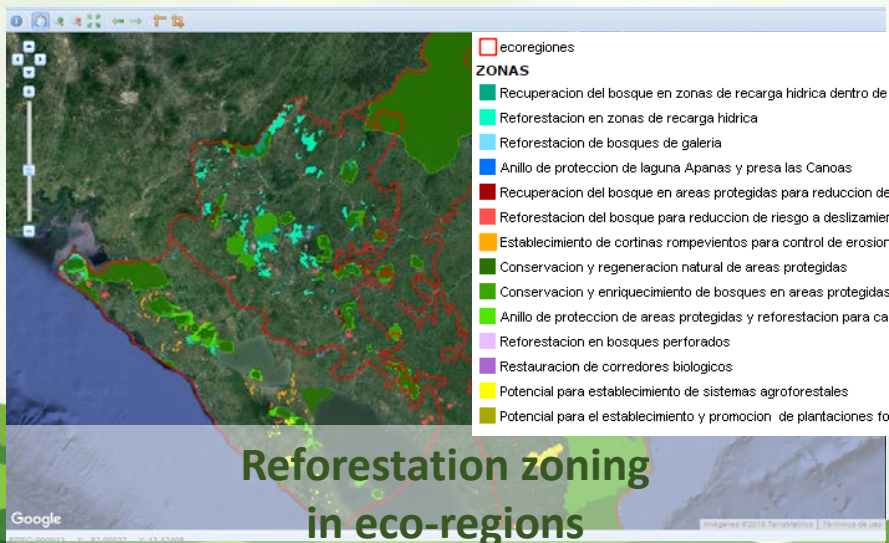
Portal for infrastructure of spatial
data

Strengthening nation-wide land-use change monitoring



<http://mapserver1.ineter.gob.ni:8080/IDE-PRODUCCION/>

<http://mapserver1.ineter.gob.ni:8080/IDE-USOPOTENCIAL/>

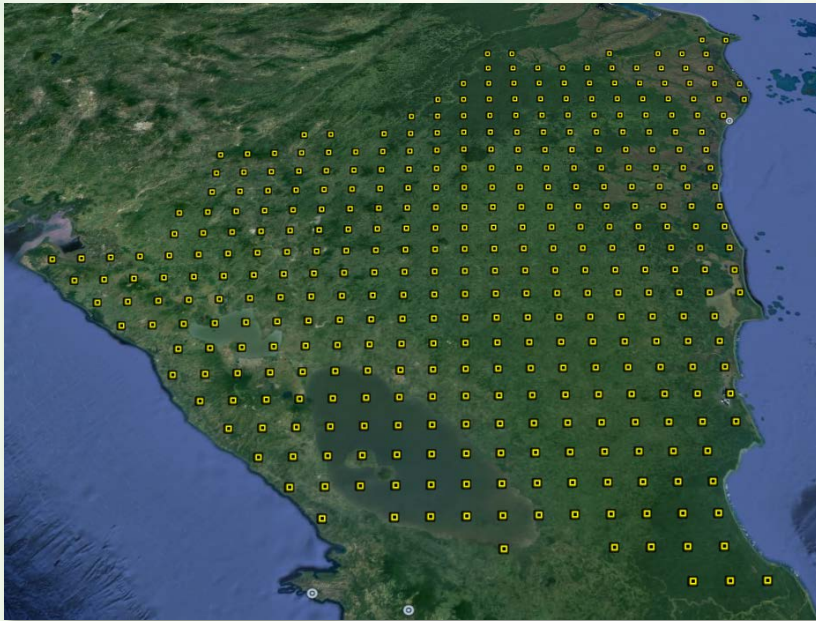


<http://mapserver1.ineter.gob.ni:8080/IDE-DEFORESTACION/>

4a. National Forest Monitoring System

Strengths of nationwide monitoring

Forest Inventory Unit: coordinates the monitoring of 371 parcels clusters in forest areas and other types of land use



<http://www.inafor.gob.ni/inventario/>

**INAFOR
(Forestry
Institute)**

- Forest Inventory Unit
- Network of monitoring and follow-up parcels
- Record-keeping system for forest management schemes and plantations

CAVAMA Project (improvement of timber value chain)

Four key components:

- 1 • Forest governance and institutional development
- 2 • Forest incentives to promote commercial plantations
- 3 • Develop capacities among human resources in the value chain
- 4 • Develop capacities among human resources in the value chain



<http://www.inafor.gob.ni/que-es-cavama.html>

4a. National Forest Monitoring System

MARENA

Environmental indicator monitoring system

Territorial monitoring stations (SINIA nodes)

Publishes national and INGEI communications

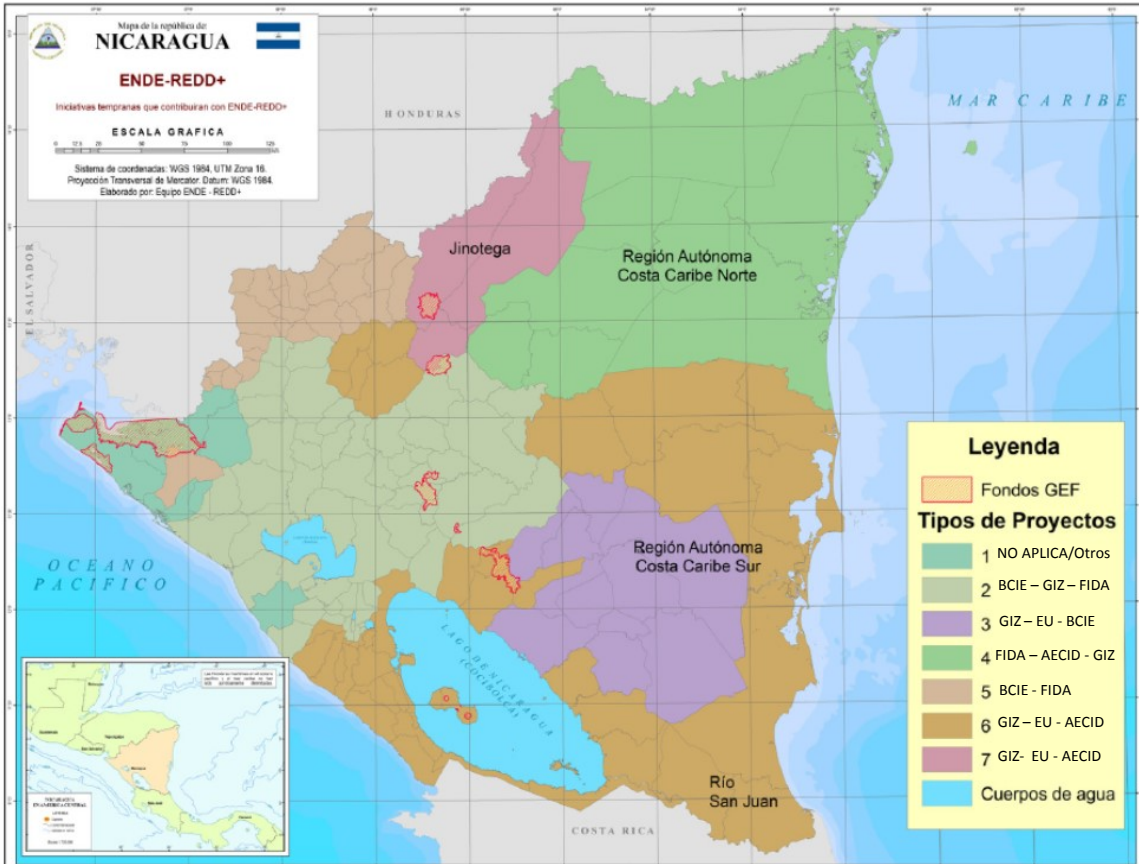
Strengthening nation-wide land-use change monitoring

Seven early initiatives that will contribute to ENDE REDD+:
Public and private investment at local scale



LOCAL ACTIONS:

Protected areas monitoring system
Agroforestry systems, forest commercial plantations, restoration of landscapes and improved livelihoods



1 = No aplica • 2 = AGRADAPTA/INCAADAPTA/ CAVAMA • 3 = BOVINOS/CAVAMA • 4 = NICACARIBE • 5 = RIO COCO/NICADAPTA/ • 6 = CAVAMA • 7 = BOSAWAS y CAVAMA

4a. National Forest Monitoring System

Next steps

1

Strengthen technological capacities for SNMRV data management

2

Validate mapping and spatialization of deforestation drivers

3

SNMB interoperability tests between systems at multiple institutions

4

Consultation of institutional roles to ensure proper functioning of SNMRV

5

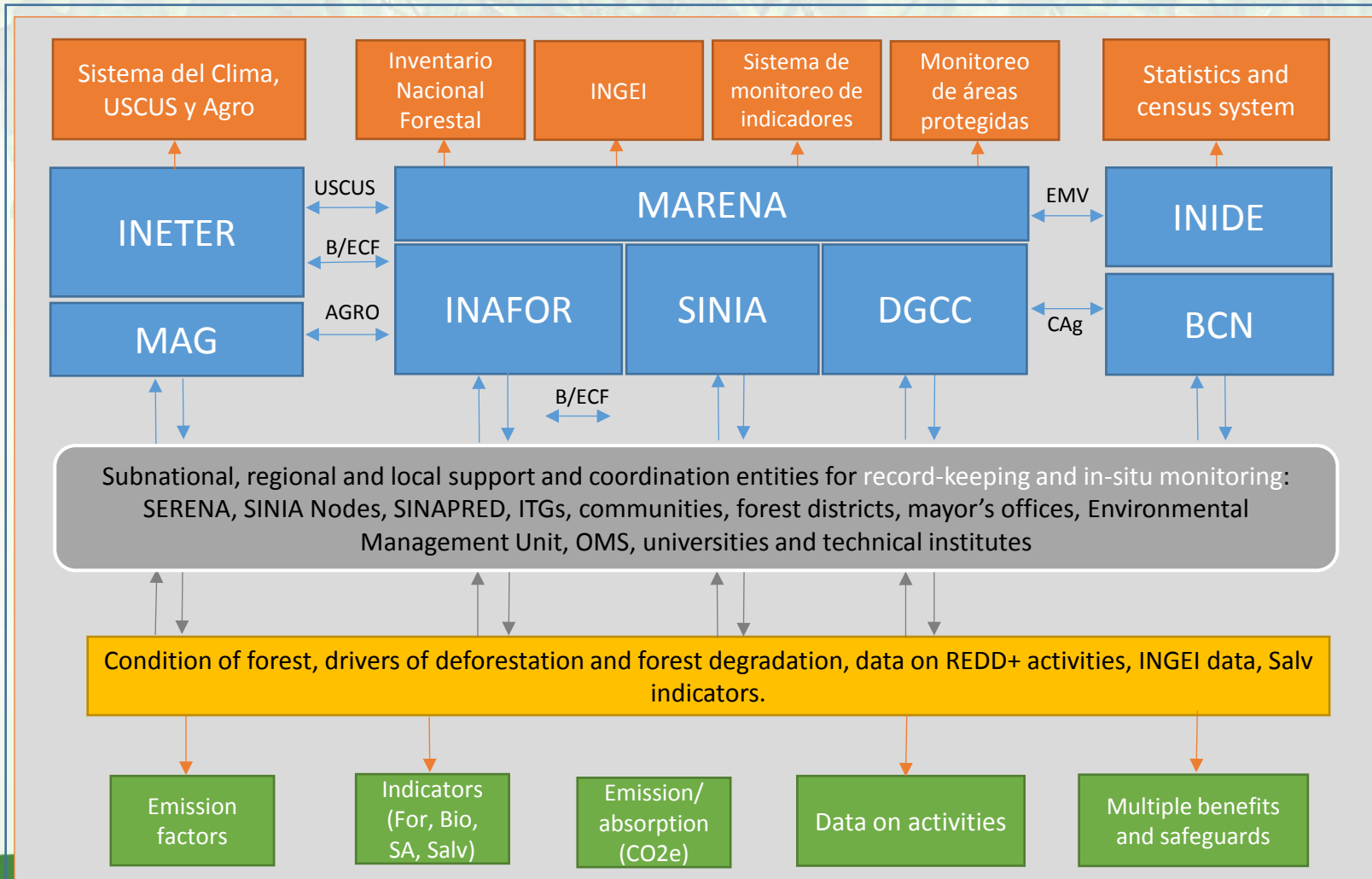
Strengthening the capacity of monitoring roundtables at national, regional and community level

GOAL

To validate and integrate the SNMRV and its subsystems (interoperability among multiple institutions) and have a prototype functioning during the first semester of 2017.

4a. National Forest Monitoring System

Preliminary proposal for a Monitoring, Reporting and Verification System



Códigos

AGRO/CAG: data on agriculture and cattle-ranching
 Bos: Forest
 Bio: Biodiversity
 B/ECF: Forests and forest ecosystems

EMV: Livelihood interviews (national census)
 SIS: Safeguards Information System
 SNMB: National Forest Monitoring System
 SNMBe: National Multiple Benefits Monitoring System
 USCUS: Land use and changes in land use

4b. Forest monitoring multiple benefits information system



GOAL

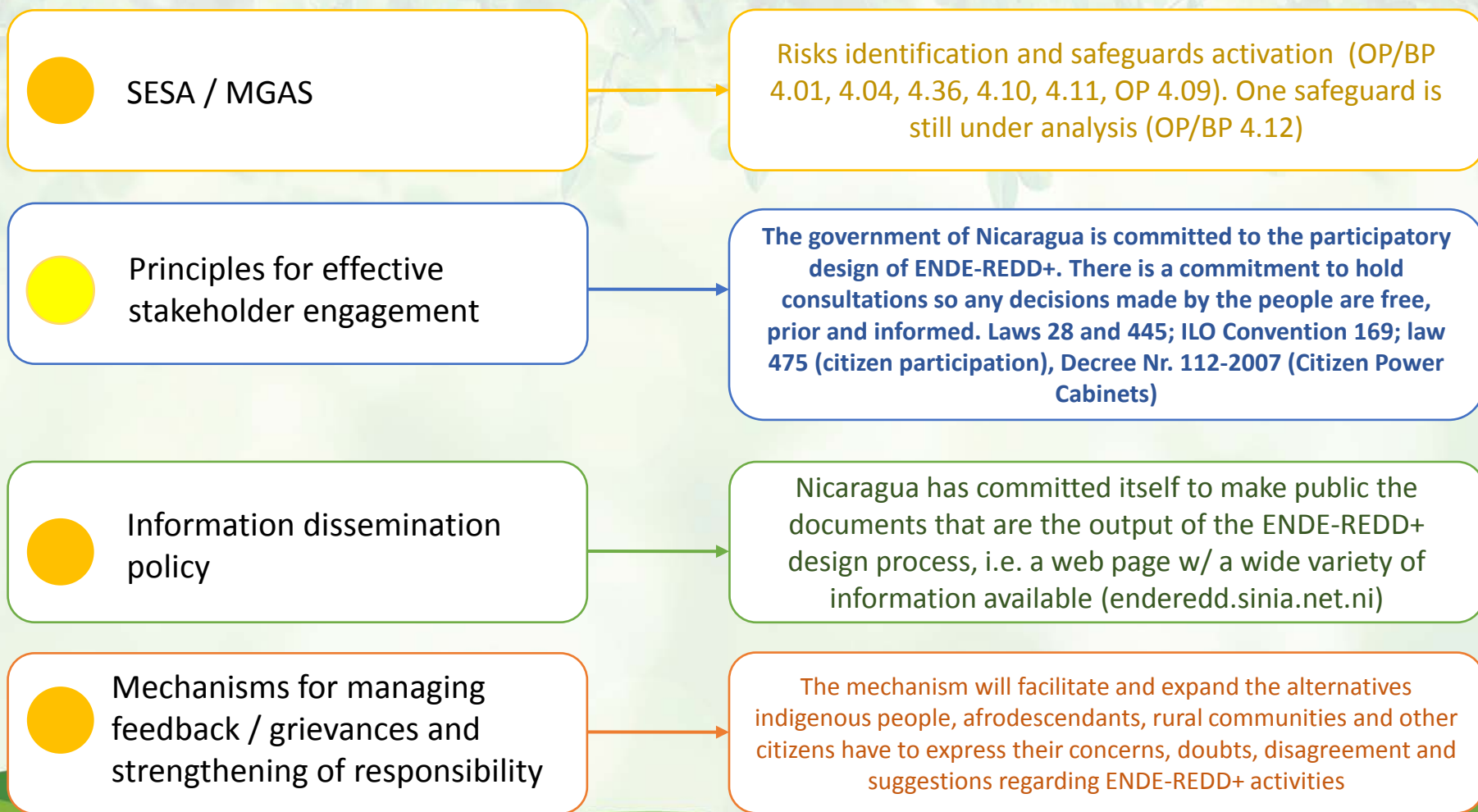
Participatory preparation of prototypes for SNMBe and SIS subsystems; validation of operational testing during first semester of 2017.



III. Common approach in practice

IV. Compliance with the common approach

Progress to date has been possible due to organization and dialogue through SESA roundtables, one each in the two autonomous regions on the Caribbean Coast





IV. FCPF budget and financial performance

Funds pledged, committed and disbursed

> 50% of available resources committed by mid-term World Bank mission (May 2016)

| Uses of Funds (in US\$ thousands) | | | |
|--|----------------------|---------------------------|------------------------|
| R-PP Component | Funds pledged (a) | Funds Committed (b) | Funds Disbursed (c) |
| 1) Governance, organisation and consultation | 2,071.16 | 242.11 | 1,349.15 |
| 2) National Strategy to Reduce Deforestation and Forest Degradation (ENDE REDD+) | 186.42 | 56.32 | 43.50 |
| 3) Strengthen technical capacity at government institutions for the analysis evaluation of forest dynamics, deforestation and forest degradation | 275 | 45.32 | 83.03 |
| 4) Strengthen and articulate the National Multipurpose Forest Monitoring System | 782.92 | 112.86 | 375.84 |
| 5) Project Follow-up and Evaluation System | 484.5 | 19 | 50.50 |
| TOTAL US \$ | 3,800 | 475.61 | 1,902.02 |
| Percentage % (b+c) | | 63 | |



V. Request for additional funds

Justification of request for additional funds

Additional funding will be used to:

Strengthen technical coordination and national supervision of the ENDE-REDD+ process in order **to ensure an attainable and successful readiness phase that meets FCPF standards.**

Pay expenses derived from engagement of technical, administrative and financial professionals.

Strengthen key entities charged with monitoring (SNMRV) , as well as subsystems (SNMB, SIMBe and SIS).

Keep an on-going dialogue with protagonists, i.e., the ENDE-REDD+ national consultation program in the cases of indigenous peoples and afro-descendants on the Caribbean coast will take place at community level.

Ensure financing of high logistical costs required to access remote rural areas in the country (Example: it is cheaper to fly across Central America than to travel to all main villages on the Caribbean coast).

Additional Funding Request

| Component | Sub-component | Cantidad (Miles US \$) |
|--|---|---------------------------|
| 1. Organization and consultation for readiness | 1a. National Mechanisms of REDD+ program management | 1,171 |
| | 1b. Consultation, participation and social broadcasting | 452 |
| | Sub Total | 1,623 |
| 2. Readiness of the REDD+ strategy | 2a. Land use assessment, factors causing changes in land use, legislation on forestry, policy and management | 38 |
| | 2b. REDD+ Strategy Options | |
| | 2c. Implementation Framework | 80 |
| | 2d. Social and Environmental Impacts | |
| | Sub Total | 118 |
| 3. Emissions level of reference / reference Levels | | 570 |
| 4. National Systems of Monitoring and Information on the Safeguards | 4a. National Forest Monitoring System | 2,639 |
| | 4b. Information system for multiple benefits, other impacts, management and safeguards | 50 |
| | Sub Total | 2,689 |
| Total (Miles US \$) | | 5,000 |

Additional Funding Request

| Funding to be implemented by ENDE-REDD+ partner institutions | | | |
|--|--------|--------|------|
| MARENA | INETER | INAFOR | MHCP |
| 47% | 36% | 10% | 7% |

(Miles US \$)

Fondos adicionales por componente (%)

1. Organization and consultation for readiness



2. Readiness of the REDD+ strategy



3. Emissions level of reference / reference Levels



4. National Systems of Monitoring and Information on the Safeguards



0 500 1000 1500 2000 2500 3000

Components

THANK YOU VERY MUCH!



www.marena.gob.ni

www.enderedd.sinia.net.ni

Marena Nicaragua

@MarenaNicaragua

MarenaNicaragua